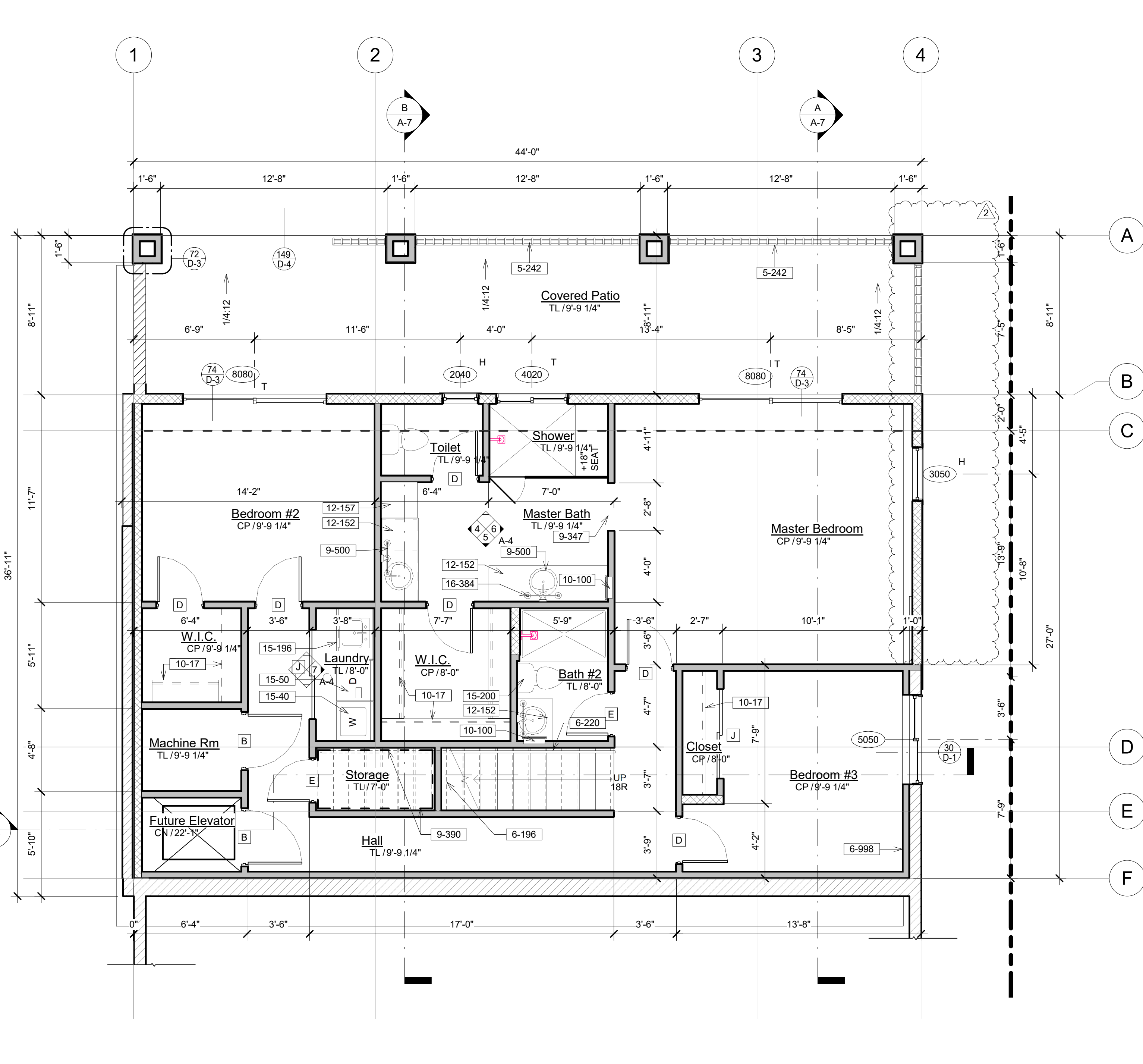
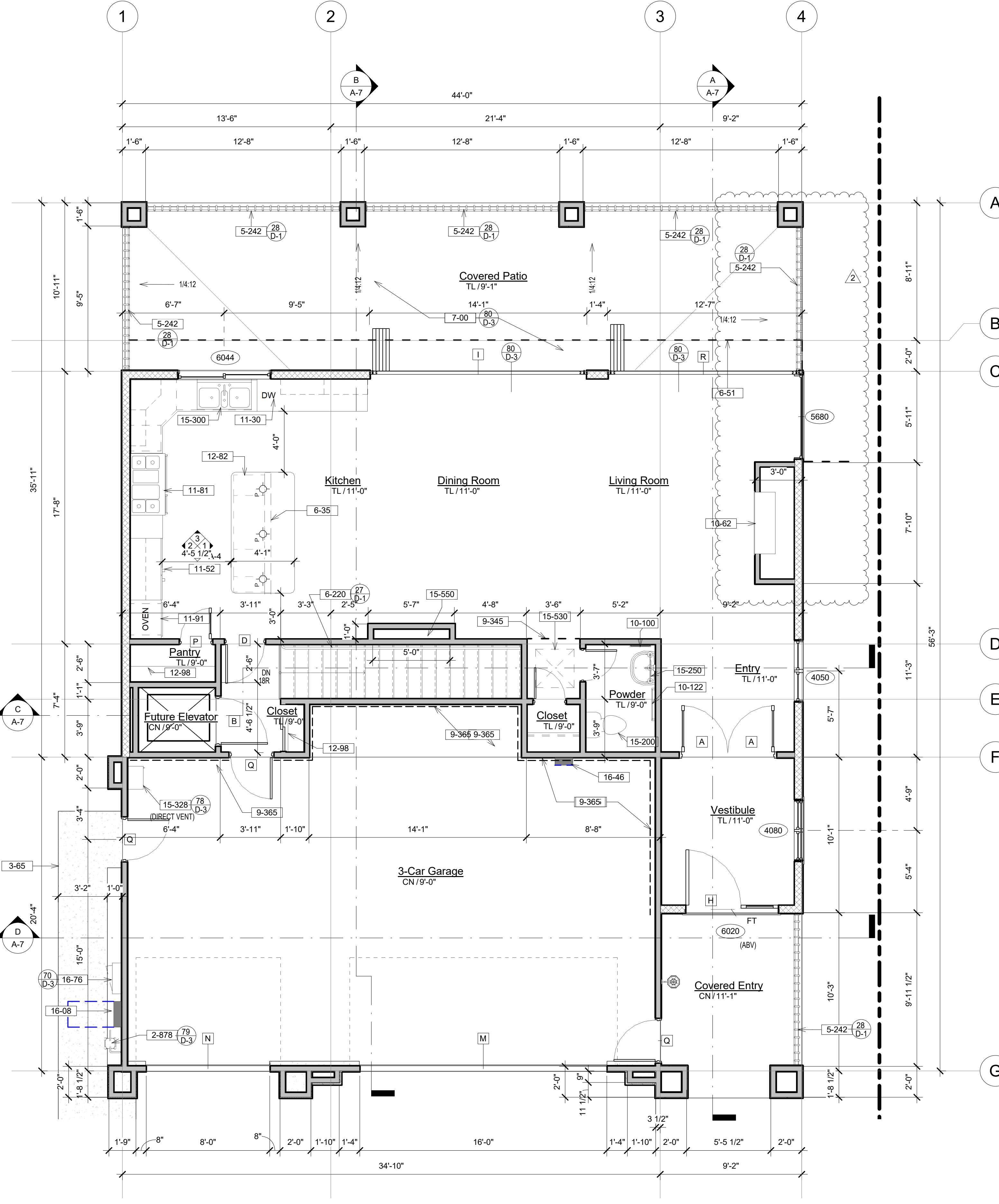


**Plan Notes**

- 2-878 NEW GAS SERVICE FROM STREET (BY UTILITY)
- 3-65 3-1/2" THICK CONCRETE SLAB ON GRADE WITH MEDIUM BROOM FINISH. SLOPE 1/8" PER FOOT MINIMUM AWAY FROM BUILDING. PROVIDE A LANDING AT ALL DOORS A MINIMUM OF 2' BEYOND EACH SIDE OF DOOR AND A MINIMUM OF 3'-0" OUT FROM FACE OF DOOR.
- 5-242 42" HIGH WROUGHT IRON GUARDRAIL WITH 3/4" X 3/4" RAILS SPACED SUCH THAT A 4" DIAMETER SPHERE CANNOT PASS THROUGH.
- 6-35 35" HIGH WOOD STUD WALL (34-1/2" ROUGH FRAME) WITH DRYWALL SIDES AND CAP AND WITH COUNTERTOP ABOVE
- 6-51 LINE OF FLOOR BELOW
- 6-196 VOID SPACE
- 6-220 WOOD HANDRAIL WITH METAL BRACKET SUPPORTS AT 5'-0" O/C CAPABLE OF SUPPORTING A 200 POUND LOAD AT ANY POINT IN ANY DIRECTION ON THE RAIL (3" ABOVE NOSING) THE HANDRAIL PORTION OF THE HANDRAIL SHALL BE NOT LESS THAN 1-1/4" NOR MORE THAN 1-1/2" IN CROSS-SECTIONAL DIMENSION OR THE SHAPE SHALL PROVIDE AN EQUIVALENT GRIPPING SURFACE
- 6-998 NON-BEARING FURRING WALL NEXT TO RETAINING WALL
- 7-00 WATERPROOF DECK COVERING (DEX-O-TEX WEATHERWEAR DECK SURFACING AS MANUFACTURED BY CROSSFIELD PRODUCTS CORP., RANCHO DOMINGUEZ, CA. (949) 380-1303) (GLASS \*X\* FIRE RATED PER ICC REPORT NO. ESR-1757). DECK TO BE INSTALLED IN ACCORDANCE WITH MANUFACTURER'S RECOMMENDATIONS BY A CONTRACTOR TRAINED AND APPROVED BY THE MANUFACTURER.
- 9-345 LINE OF CEILING HEIGHT CHANGE
- 9-347 LINE OF CEILING HEIGHT CHANGE (SEE PLAN FOR CEILING HEIGHTS)
- 9-365 1/2" THICK GYPSUM BOARD GARAGE SIDE OF ALL WALLS ADJACENT TO HOUSE FROM SLAB TO ROOF SHEATHING. PROVIDE MINIMUM 24" HORIZONTAL SEPARATION BETWEEN OFFSET ELECTRICAL RECEPTACLES, GAS VENTS, METAL CHIMNEY PENETRATING THE FINISH SHALL BE FIRE STOPPED WITH AN APPROVED ASSEMBLY. PLASTIC PIPE SHALL NOT PIERCE FINISH. DUCTS ON THE GARAGE SIDE SHALL BE A MINIMUM 26 GAUGE SHEET METAL.
- 9-390 PROVIDE ONE LAYER 5/8" TYPE "X" GYPSUM BOARD ON ALL WALLS AND CEILINGS OF USABLE SPACE UNDER STAIRS. ELECTRICAL BOXES INSTALLED IN THESE WALLS OR CEILING SHALL BE ONE-HOUR FIRE RATED.
- 9-500 BASE CABINET WITH LAMINATED PLASTIC COUNTERTOP AND 4" HIGH SPLASH AND END PLASH WITH SELF-RIMMING LAVATORY. THE MAXIMUM FLOW RATE OF LAVATORY FAUCETS SHALL NOT EXCEED 1.5 GALLONS PER MINUTE @ 60 PSI.
- 10-17 DOUBLE PLASTIC COATED WIRE SHELF (AT +82" AND +67") AND SINGLE POLE AT +65" ABOVE FLOOR WITH METAL BRACKET SUPPORTS AT 16" O/C MAX.
- 10-62 VENT-FREE HEAT CIRCULATING GAS FIREPLACE ("SUPERIOR UVFC-600" OR EQUAL) WITH FLUSH CERAMIC TILE HEARTH. NO VENT OR COMBUSTION AIR REQUIRED. ROUGH-IN 46-1/4" W x 45-1/2" H x 20-5/8" D. www.superiorfireplaces.com
- 10-100 RECESSED MEDICINE CABINET (TOP AT +72" ABOVE FLOOR)
- 10-122 TOWEL BAR (+54) PROVIDE 2 x 6 SOLID BACKING ("DELTA" #78520C)
- 11-30 DISHWASHER SPACE
- 11-52 REFRIGERATOR SPACE (PROVIDE RECESSED SHUT-OFF IN PLASTIC BOX FOR ICEMAKER)
- 11-61 SLIDE-IN GAS COOKTOP WITH OVEN BELOW AND EXHAUST HOOD AND 7" DIAMETER GALVANIZED SHEET METAL DUCT TO OUTSIDE AIR HOOD ABOVE
- 11-91 BUILT-IN CONVECTION OVEN WITH MICROWAVE ABOVE TO BE FURNISHED BY OWNER AND INSTALLED BY CONTRACTOR. PROVIDE 3/4" GAS AND 20 AMP 120 V. ELECTRICAL OUTLET ON SEPARATE CIRCUIT.
- 12-82 24" DEEP STAIN GRADE BASE CABINET
- 12-98 FIVE (5) FIXED WOOD SHELVES
- 12-152 KNEE SPACE FOR MAKE-UP AREA
- 12-157 7'-0" HIGH STORAGE CABINETS (LAMINATED PLASTIC FACED) WITH FIVE (5) ADJUSTABLE SHELVES (16" DEEP FOR LEGAL FILES)
- 15-40 HOT AND COLD WATER SHUT-OFF IN RECESSED PLASTIC BOX FOR CLOTHES WASHER (CLOTHES WASHER IS NIC)
- 15-50 CLOTHES DRYER (NIC)
- 15-196 15" x 15" x 7-1/4" DEEP STAINLESS STEEL SINGLE-BOWL SELF-RIMMING SINK
- 15-200 TANK-TYPE WATER CLOSET (1.28 GALLONS PER FLUSH MAXIMUM)
- 15-250 PEDESTAL LAVATORY
- 15-300 30" x 22" DOUBLE BOWL SELF-RIMMING ENAMELED STEEL KITCHEN SINK WITH 1/2 HP GARBAGE DISPOSER
- 15-328 RESIDENTIAL TANKLESS GAS-FIRED HOT WATER FIXTURE ON WALL WITH 3/4" GAS AND WATER CONNECTION AND 4" DIAMETER "B" VENT (SEE MECHANICAL SYSTEM NOTES FOR MANUFACTURER AND MODEL NUMBER). VERIFY REQUIRED INPUT BTU RATE WITH OWNER.
- 15-530 30" x 30" ATTIC ACCESS FOR ATTIC FAU. PROVIDE WEATHERSTRIP OR SEAL AT THE ATTIC ACCESS PANEL TO PREVENT DRAFTS. (ACCESS SHALL BE SIZED TO ACCOMMODATE REMOVAL OF LARGEST PIECE OF EQUIPMENT)
- 15-550 DUCT SPACE (VERIFY EXACT SIZE IN FIELD)
- 16-08 NEW 200 AMP ELECTRICAL MAIN SERVICE (UNDERGROUND FEED) (VERIFY EXACT LOCATION WITH UTILITY) (PROVIDE GAS AND WATER BONDING TO SERVICE)
- 16-46 EV PANEL
- 16-76 PROPOSED LOCATION FOR FUTURE INVERTER AND METERING EQUIPMENT FOR SOLAR PANELS PER ENERGY CODE SECTION 110.10
- 16-384 WALL SCONCE LIGHT (+84" UON)



**Basement Floor Plan**  
1/4" = 1'-0"



**Ground Floor Plan**  
1/4" = 1'-0"

**Fire Notes**

1. ROOF COVERINGS SHALL BE EITHER NONCOMBUSTIBLE OR SHALL BE FIRE RETARDANT MATERIAL NOT COMPOSED OF ORGANIC FIBER WITH A MINIMUM CLASS "A" RATING
  2. ALL EXTERIOR WALL COVERINGS SHALL BE APPROVED NONCOMBUSTIBLE OR IGNITION-RESISTANT MATERIAL
  3. EAVES SHALL PROVIDE ONE-HOUR FIRE RESISTANCE-RATED CONSTRUCTION OR EQUIVALENT (SEE KEY NOTE 9-110)
  4. EXTERIOR DOOR ASSEMBLIES SHALL MEET STANDARD SFM 12-7A-1 OR SHALL BE OF APPROVED NONCOMBUSTIBLE CONSTRUCTION
  5. ADDRESS NUMBERS SHALL HAVE INTERNALLY ILLUMINATED, NONCOMBUSTIBLE
- EXTERIOR DOORS**
- EXTERIOR DOORS SHALL COMPLY WITH ONE OF THE FOLLOWING:
    - THE EXTERIOR SURFACE OR GLAZING SHALL BE OF NONCOMBUSTIBLE OR IGNITION RESISTANT MATERIALS
    - SOLID WOOD DOORS HAVING STILES AND RAILS NOT LESS THAN 1-3/8" THICKNESS WITH THE INTERIOR FIELD PANELS NOT LESS THAN 1-1/4" THICKNESS, EXCEPT FOR THE EXTERIOR PERIMETER OF THE RAISED PANEL THAT MAY TAPER TO A TONGUE NOT LESS THAN 3/8" THICK.
    - SHALL HAVE A FIRE-RESISTANCE RATING OF NOT LESS THAN 20 MINUTES
    - SHALL BE TESTED TO MEET THE PERFORMANCE REQUIREMENTS OF SFM STANDARD 12-7A-1
- EXTERIOR GLAZING NOTES**
- EXTERIOR GLAZING IN EXTERIOR WINDOWS, EXTERIOR GLAZED DOORS, GLAZED OPENINGS IN EXTERIOR DOORS, GLAZED OPENINGS IN EXTERIOR GARAGE DOORS OR STRUCTURAL GLASS SHALL COMPLY WITH ONE OF THE FOLLOWING REQUIREMENTS:
    - DOUBLE GLAZED INSULATING GLASS WITH ONE OF THE PANES TEMPERED AND THE SECOND PANE MAY BE PLAIN GLASS
    - EITHER THE INTERIOR OR EXTERIOR PANEL MAY BE TEMPERED
    - GLASS BLOCK UNITS
    - A TWENTY (20) MINUTE FIRE-RESISTIVE RATED WINDOW ASSEMBLY
    - BE TESTED TO MEET THE PERFORMANCE REQUIREMENTS OF SFM STANDARD 12-7A-2, STRUCTURAL GLASS VENEER. THE WALL ASSEMBLY BEHIND STRUCTURAL GLASS VENEER SHALL COMPLY WITH SECTION 707A.3 FOR EXTERIOR WALLS.

**Wall Legend**

- 
- 
- 

**Symbol Legend**

- 
- 

Proposed Custom Home For:  
**Rodney and Brandy Arthur**  
16733 La Bella Villa, Riverside, CA 92505

21 Dec 2020	9 Feb. 2021
19-3675	4 March, 2021

**Floor Plans**

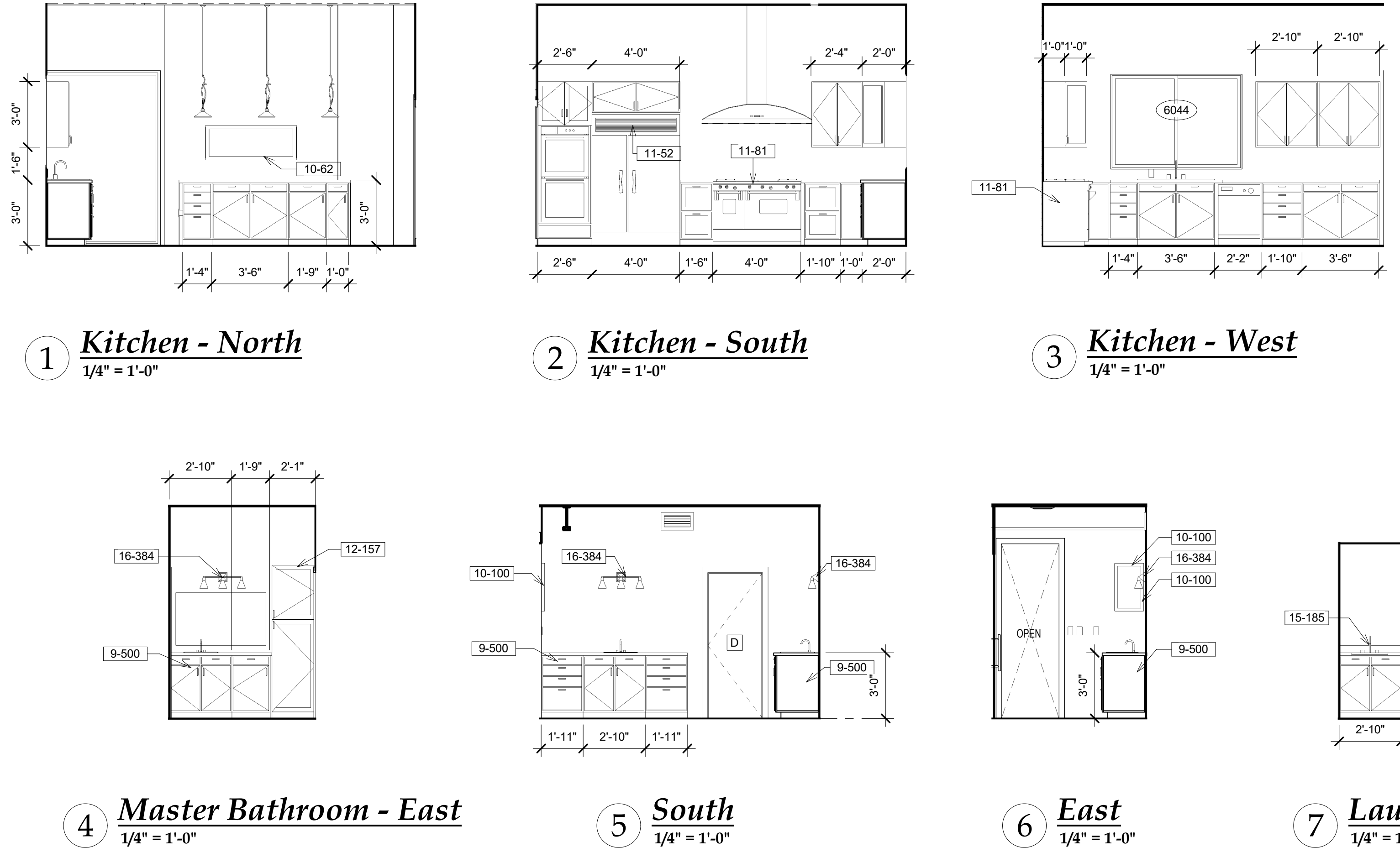
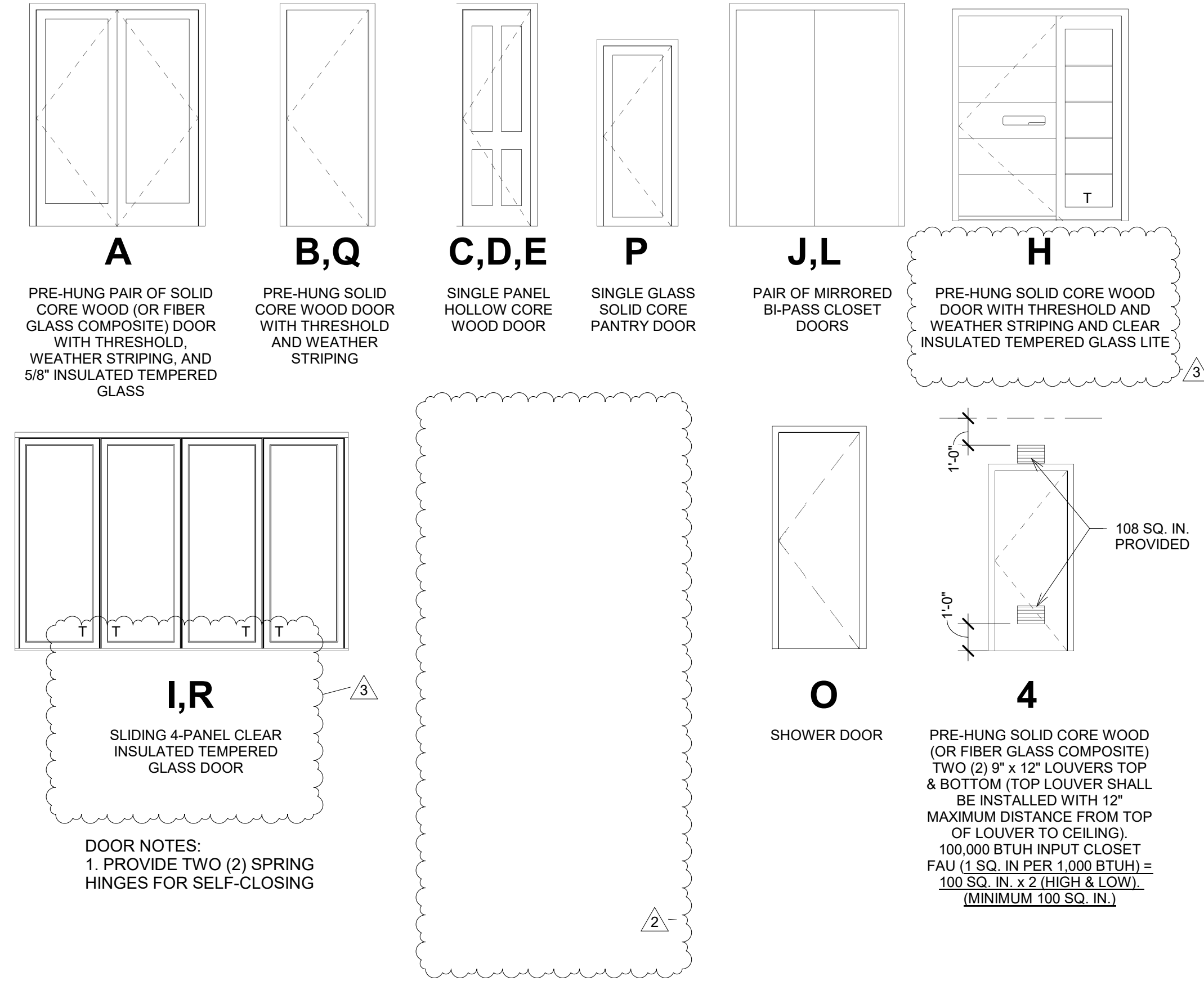


C:\Users\JonathanBallesteros\Andresen Architecture Inc\AA1 - Access\Projects\13 Projects\2019-2021\19-3675 Arthur Residence.rvt (19-3675 Arthur Residence.rvt) 2/2/2022 2:16:18 PM

Door Finish Abbreviation	
Abbrev.	Description
AL	ALUMINUM
AN	BRONZE ANODIZED
BA	BAKED ENAMEL
CA	CLEAR ANODIZED
GL	GLASS
HC	HOLLOW CORE WOOD
HM	HOLLOW METAL
INT	INTEGRAL
MR	MIRROR
P	PRIME AND PAINT
PC	POWDER COAT
PF	PREFINISHED
PL	PLASTIC LAMINATE
PS	PRESSED STEEL (TIMELY)
RFP	READY FOR PAINT
SC	SOLID CORE
ST	STAIN AND SEAL
STL	STEEL
T	TEMPERED
WD	WOOD
WDF	WOOD FRAME

Door Schedule												
Type Mark	Type	Size	Door			Height	Thickness	Glass	Fire Rated	Frame		Comments
			Material	Finish	Width					Material	Finish	
A	Double - Glass 1 - AL	PAIR 3080	GL	PF	6'-0"	8'-0"	1 3/4"	5/8" Temp.		WD	PT	
B	Single - Flush - SC	3068	SC	PT	3'-0"	6'-8"	1 3/8"		20' MIN.	WD	PT	
C	Single - Flush - HWD	2068	HWD	PT	2'-0"	6'-8"	1 3/8"			WD	PT	
D	Single - Flush - HWD	2668	HWD	PT	2'-4"	6'-8"	1 3/8"			WD	PT	
E	Single - Flush - HWD	2468	HWD	PT	2'-4"	6'-8"	1 3/8"			WD	PT	
G	Frameless_Glass_Door	2076	GL	INT	2'-0"	7'-6"	1/2"	1/2" Temp.		WD	PT	
H	Single-Raised Panel with Sidelights	3080	SC	PT	3'-0"	8'-0"	1 3/4"			WD	PT	
I	Door-NanaWall-WD-65	14080	GL	PF	14'-0"	8'-0"	2 19/32"	5/8" Temp.		WD	PT	
J	Door-NanaWall-WD-65	5090	HWD	PT	5'-0"	8'-0"	1 3/4"	5/8" Temp.		WD	PT	
L	Door-NanaWall-WD-65	3080	HWD	PT	3'-0"	8'-0"	1 3/4"	5/8" Temp.		WD	PT	
M	Garage Door - (1)Panel (No-Window)	16x7 Design Arch	STL	PT	16'-0"	7'-0"	0"			WD	PT	
N	Garage Door - (1)Panel (No-Window)	8x7 Design Arch	STL	PT	8'-0"	7'-0"	0"			WD	PT	
P	Single-Glass 1-SC1	2068	GL	PT	2'-0"	6'-8"	1 3/4"	1/2" Temp.		WD	PT	
Q	Single - Flush - SC	2868	SC	PT	2'-8"	6'-8"	1 3/8"			WD	PT	
R	Door-NanaWall-WD-65	12480	GL	PF	12'-4"	8'-0"	2 19/32"	5/8" Temp.		WD	PT	

**Door Legend**



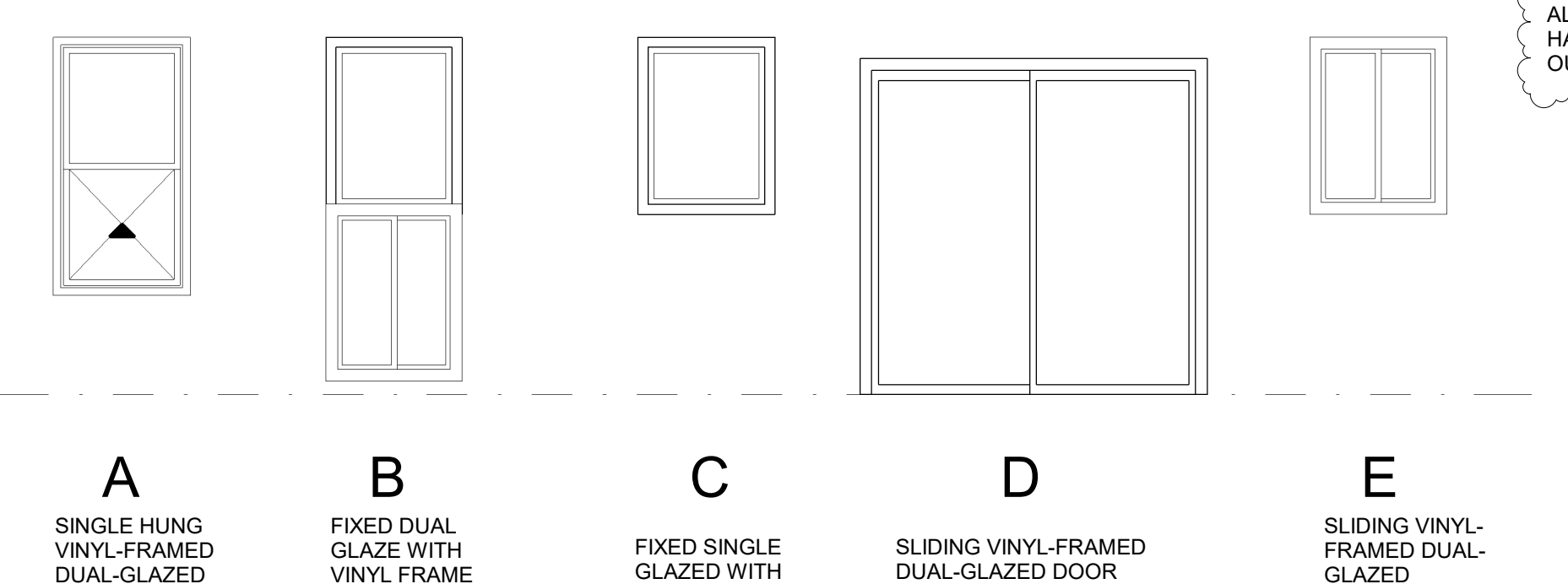
**Plan Notes**

- 9-500 BASE CABINET WITH LAMINATED PLASTIC COUNTERTOP AND 4" HIGH SPLASH AND END SPLASH WITH SELF-RIMMING LAVATORY. THE MAXIMUM FLOW RATE OF LAVATORY FAUCETS SHALL NOT EXCEED 1.5 GALLONS PER MINUTE @ 60 PSI.
- 10-62 VENT-FREE HEAT CIRCULATING GAS FIREPLACE ("SUPERIOR LVFC-600" OR EQUAL) WITH FLUSH CERAMIC TILE HEARTH. NO VENT OR COMBUSTION AIR REQUIRED. ROUGH-IN 46-1/4" W. x 43-1/2" H. x 20-5/8" D. www.superiorfireplaces.com
- 10-100 RECESSED MEDICINE CABINET (TOP AT +72" ABOVE FLOOR)
- 11-52 REFRIGERATOR SPACE (PROVIDE RECESSED SHUT-OFF IN PLASTIC BOX FOR ICE/MAKER)
- 11-81 SLIDE-IN GAS COOKTOP WITH OVEN BELOW AND EXHAUST HOOD AND 7" DIAMETER GALVANIZED SHEET METAL DUCT TO OUTSIDE AIR HOOD ABOVE
- 12-157 7'-0" HIGH STORAGE CABINETS (LAMINATED PLASTIC FACED) WITH FIVE (5) ADJUSTABLE SHELVES (16" DEEP FOR LEGAL FILES)
- 15-40 HOT AND COLD WATER SHUT-OFF IN RECESSED PLASTIC BOX FOR CLOTHES WASHER (CLOTHES WASHER IS NIC)
- 15-50 CLOTHES DRYER (NIC)
- 15-185 LAUNDRY SINK
- 16-384 WALL SCONCE LIGHT (+84" UON)

**Window Types**

- WINDOW GENERAL NOTES:**
- A. WINDOWS TO BE INSTALLED WITH MOISTPROOF 12" WIDE FLASHING AND CAULK WITH SILICONE SEALANT. WINDOW FRAMES TO HAVE WHITE FINISH.
  - B. PROVIDE SAFETY GLAZING OR TEMPERED GLASS IN HAZARDOUS LOCATIONS PER CBC 2406.3 SUCH AS GLAZING IN FIXED OR OPENABLE PANELS ADJACENT TO A DOOR WHERE THE NEAREST EXPOSED EDGE OF THE GLAZING IS WITHIN A 24" ARC OF EITHER VERTICAL EDGE OF THE DOOR IN THE CLOSED POSITION AND WHERE THE BOTTOM EXPOSED EDGE OF THE GLAZING IS LESS THAN 80" ABOVE THE WALKING SURFACE. A PERMANENT LABEL PER CBC 2406.2 SHALL IDENTIFY EACH LIGHT OF SAFETY GLAZING.
  - D. ALL WINDOWS IN CONDITIONED ROOMS TO HAVE CLEAR DUAL GLAZING (U=0.30 MAX. & SHGC=0.25 MAX.) (GLASS VINYL OR EQUAL) (U.O.N.). ALL WINDOWS IN UNCONDITIONED AREAS TO HAVE CLEAR SINGLE GLAZING.
  - E. PROVIDE BLINDS FOR ALL EXTERIOR AND INTERIOR WINDOWS
  - F. SLEEPING ROOMS MUST HAVE A WINDOW OR EXTERIOR DOOR FOR EMERGENCY EXIT. SILL HEIGHT NOT MORE THAN 44 INCHES ABOVE THE FLOOR. 5.7 SQUARE FEET OF OPENABLE AREA. 24 INCHES CLEAR OPENING HEIGHT, 20 INCHES CLEAR OPENING WIDTH AND SHALL OPEN DIRECTLY INTO A PUBLIC STREET, ALLEY, YARD OR EXIT COURT. R310.2.1 AND R310.2.2.
  - G. T = TEMPERED (SEE PLAN)

Window Schedule			
Mark	Width	Height	Type
2040	2'-0"	4'-0"	A
3050	3'-0"	5'-0"	A
4020	4'-0"	2'-0"	E
4050	2'-0"	5'-6"	A
4060	4'-0"	8'-0"	B
5050	5'-0"	5'-0"	E
5680	5'-6"	8'-0"	C
6020	6'-0"	2'-0"	C
6044	6'-0"	4'-4"	E
8080	8'-0"	8'-0"	D



**Room Finish Schedule**

Abb.	Description
CN	CONCRETE
CONC	EXPOSED FINISHED CONC.
CP	CARPET
E.C.	EXPOSED CONSTRUCTION
EPX	EPOXY FLOORING
FRP	FIBER REINFORCED PANELS
GB	GYPSSUM BOARD
INT	INTEGRAL
PLY	PLYWOOD
PT	PAINT AND SEAL
RES	RESILIENT FLOORING
RUB	RUBBER FLOORING
SL	CLEAR CONCRETE FLOOR SEALER
SV	SHEET VINYL
TB	SUSPENDED ACOUSTICAL CEILING
TL	CERAMIC TILE
TLB	CERAMIC TILE BASE
TSB	TOP SET BASE
V-T	VINYL COATED ACOUSTICAL CEILING
WBB	WOOD BASE BOARD
WD	WOOD FLOORING
WRGB	WATER RESISTANT GYPSSUM BOARD (PROVIDE CEILING FRAMING AT 12" O.C. WHERE WATER RESISTANT GYPSSUM WALL BOARD IS USED FOR CEILING APPLICATIONS)

Rooms Name	Base Height	Floor		Walls		Ceilings		
		Material	Finish	Material	Finish	Material	Finish	Ceiling Height
Basement								
Shower	4"	TSB	TL	INT	GB	PT	GB	PT 9'-9 1/4"
Toilet	4"	TSB	TL	INT	GB	PT	GB	PT 9'-9 1/4"
Bath #2	4"	TSB	TL	INT	GB	PT	GB	PT 8'-0"
Bedroom #2	4"	TSB	CP	INT	GB	PT	GB	PT 9'-9 1/4"
Master Bedroom	4"	TSB	CP	INT	GB	PT	GB	PT 9'-9 1/4"
Master Bath	4"	TSB	TL	INT	WRGB	PT	WRGB	PT 9'-9 1/4"
Bedroom #3	4"	TSB	CP	INT	GB	PT	GB	PT 9'-9 1/4"
W.I.C.	4"	TSB	CP	INT	GB	PT	GB	PT 8'-0"
Laundry	4"	TSB	TL	INT	GB	PT	GB	PT 8'-0"
Hall	4"	TSB	TL	INT	GB	PT	GB	PT 9'-9 1/4"
W.I.C.	4"	TSB	CP	INT	GB	PT	GB	PT 9'-9 1/4"
Machine Rm	4"	TSB	TL	INT	GB	PT	GB	PT 9'-9 1/4"
Future Elevator	-	-	CN	INT	GB	PT	GB	PT 22'-1"
Storage	4"	TSB	TL	INT	GB	PT	GB	PT 7'-0"
Covered Patio	-	-	TL	INT	GB	PT	GB	PT 9'-9 1/4"
Closet	4"	TSB	CP	INT	GB	PT	GB	PT 8'-0"
GF								
Dining Room	4"	TSB	TL	INT	GB	PT	GB	PT 11'-0"
Kitchen	4"	TSB	TL	INT	GB	PT	GB	PT 11'-0"
Vestibule	4"	TSB	TL	INT	GB	PT	GB	PT 11'-0"
Living Room	4"	TSB	TL	INT	GB	PT	GB	PT 11'-0"
Pantry	4"	TSB	TL	INT	GB	PT	GB	PT 9'-0"
3-Car Garage	-	-	CN	SL	GB	PT	EC	PT 9'-0"
Entry	4"	TSB	TL	SL	GB	PT	GB	PT 11'-0"
Covered Entry	-	-	CN	SL	GB	PT	WRGB	PT 11'-1"
Covered Patio	-	-	TL	SL	GB	PT	WRGB	PT 9'-1"
Powder	4"	TSB	TL	INT	GB	PT	GB	PT 9'-0"
Future Elevator	-	-	TSB	CN	INT	GB	PT	PT 9'-0"
Closet	4"	TSB	TL	INT	GB	PT	GB	PT 9'-0"
Closet	4"	TSB	TL	INT	GB	PT	GB	PT 9'-0"

**Room Finish Legend**

- GENERAL NOTES:**
- A. 1/2" GYPSSUM BOARD ON WALLS & 1/2" GYPSSUM BOARD ON CEILINGS TO RECEIVE KNOCK-DOWN TEXTURE WITH TWO COATS LATEX FLAT ENAMEL
  - B. FLOOR MATERIAL CHANGES TO OCCUR IN CENTER OF DOOR WHEN IN A CLOSED POSITION

Proposed Custom Home For:  
**Rodney and Brandy Arthur**  
16733 La Bella Villa, Riverside, CA 92505

21 Dec 2020  
19-3675

4 March 2021  
19 May 2021

**Schedules & Int. Elevations**

**A-4**