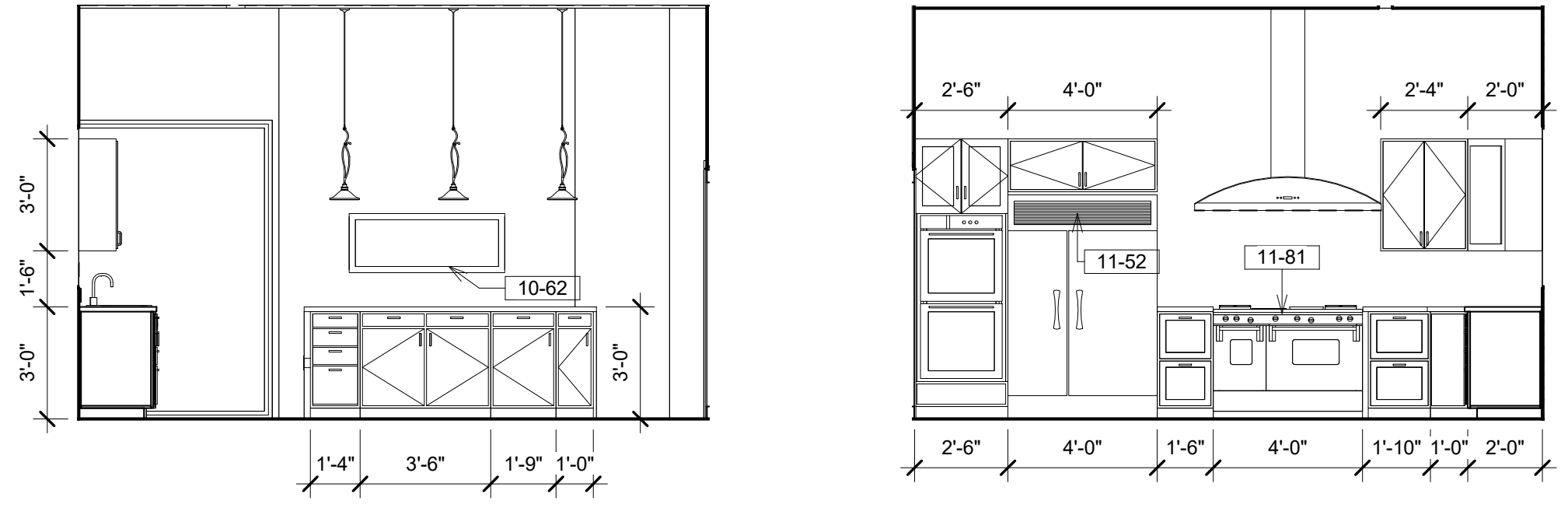


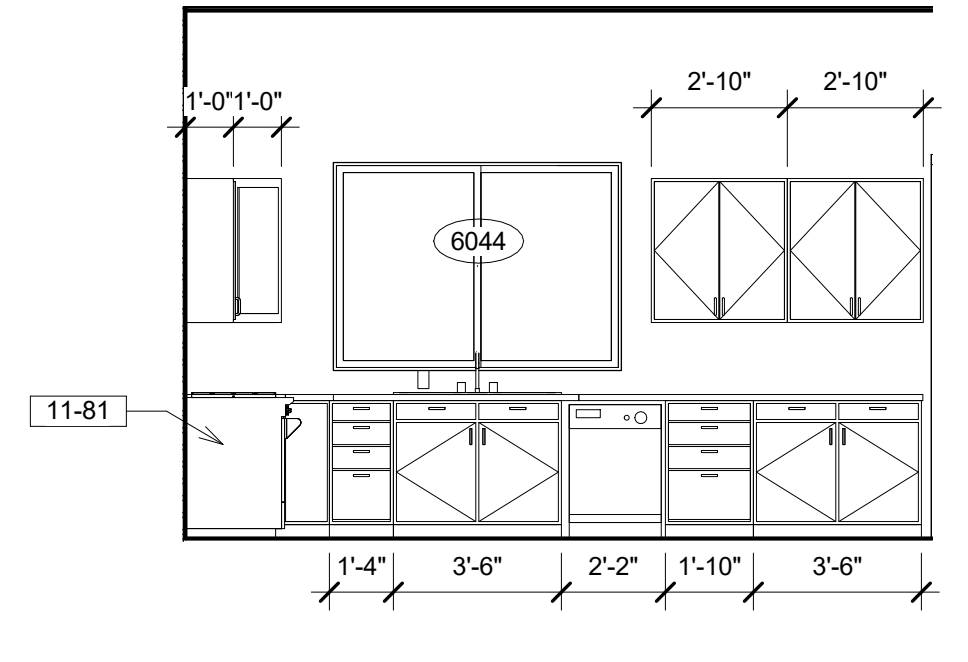
Door Finish Abbreviation	
Abbrev.	Description
AL	ALUMINUM
AN	Bronze Anodized
BA	Baked Enamel
CA	Clear Anodized
GL	Glass
HC	Hollow Core Wood
HM	Hollow Metal
INT	Integral
MR	Mirror
P	Prime and Paint
PC	Powder Coat
PF	Prefinished
PL	Plastic Laminate
PS	Pressed Steel (Timely)
RFP	Ready for Paint
SC	Solid Core
ST	Stain and Seal
STL	Steel
T	Tempered
WD	Wood
WDF	Wood Frame

Door Schedule												
Type Mark	Type	Size	Door			Glass	Fire Rated	Frame		Comments		
			Material	Finish	Width			Height	Material		Finish	
A	Double - Glass - AL	PAIR 3080	GL	PF	6'-0"	8'-0"	1 3/4"	5/8" Temp.	WD	PT		
B	Single - Flush - SC	3068	SC	PT	3'-0"	6'-8"	1 3/8"		WD	PT		
C	Single - Flush - HWD	2068	HWD	PT	2'-0"	6'-8"	1 3/8"		WD	PT		
D	Single - Flush - HWD	2668	HWD	PT	2'-4"	6'-8"	1 3/8"		WD	PT		
E	Single - Flush - HWD	2468	HWD	PT	2'-4"	6'-8"	1 3/8"		WD	PT		
G	Frameless_Glass_Door	2076	GL	INT	2'-0"	7'-6"	1/2"		WD	PT		
H	Single-Raised Panel with Sidelights	3080	SC	PT	3'-0"	8'-0"	1 3/4"		WD	PT		
I	Door-NanaWall-WD-65	14080	GL	PF	14'-0"	8'-0"	2 19/32"	5/8" Temp.	WD	PT		
J	Door-NanaWall-WD-65	5090	HWD	PT	5'-0"	8'-0"	1 3/4"	5/8" Temp.	WD	PT		
L	Door-NanaWall-WD-65	3080	HWD	PT	3'-0"	8'-0"	1 3/4"	5/8" Temp.	WD	PT		
M	Garage Door - (1)Panel (No-Window)	16x7 Design Arch	STL	PT	16'-0"	7'-0"	0"		WD	PT		
N	Garage Door - (1)Panel (No-Window)	8x7 Design Arch	STL	PT	8'-0"	7'-0"	0"		WD	PT		
P	Single-Glass 1-3C1	2068	GL	PT	2'-0"	6'-8"	1 3/4"	1/2" Temp.	WD	PT		
Q	Single - Flush - SC	2868	SC	PT	2'-8"	6'-8"	1 3/8"		WD	PT		
R	Door-NanaWall-WD-65	12480	GL	PF	12'-4"	8'-0"	2 19/32"	5/8" Temp.	WD	PT		

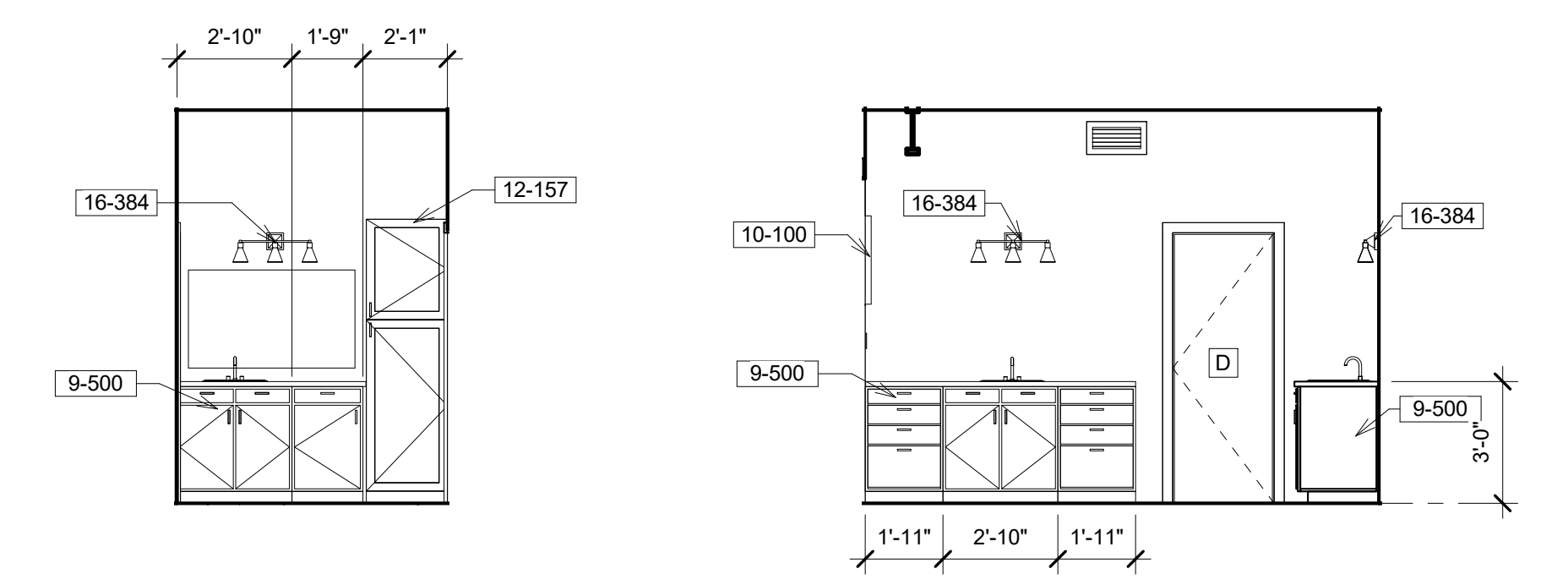


**1 Kitchen - North**  
1/4" = 1'-0"

**2 Kitchen - South**  
1/4" = 1'-0"

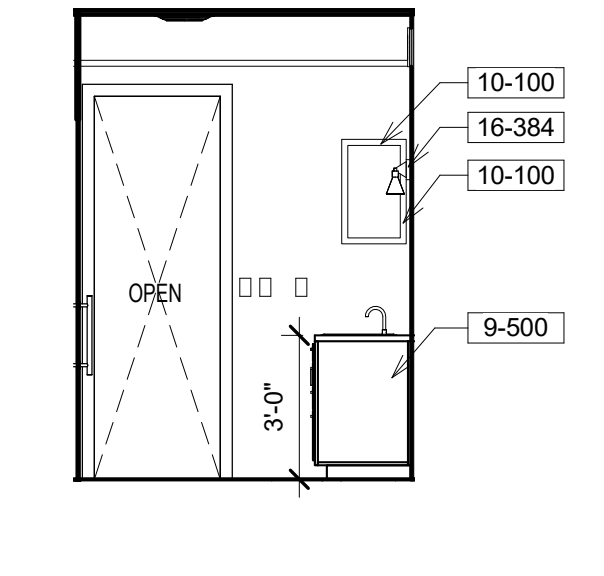


**3 Kitchen - West**  
1/4" = 1'-0"

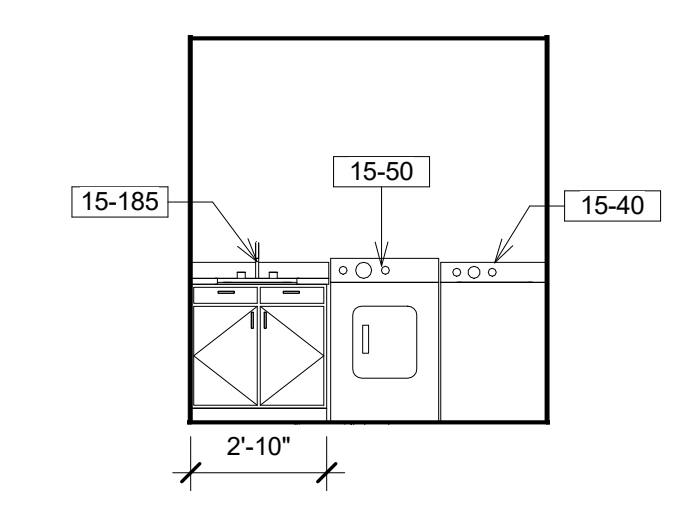


**4 Master Bathroom - East**  
1/4" = 1'-0"

**5 South**  
1/4" = 1'-0"

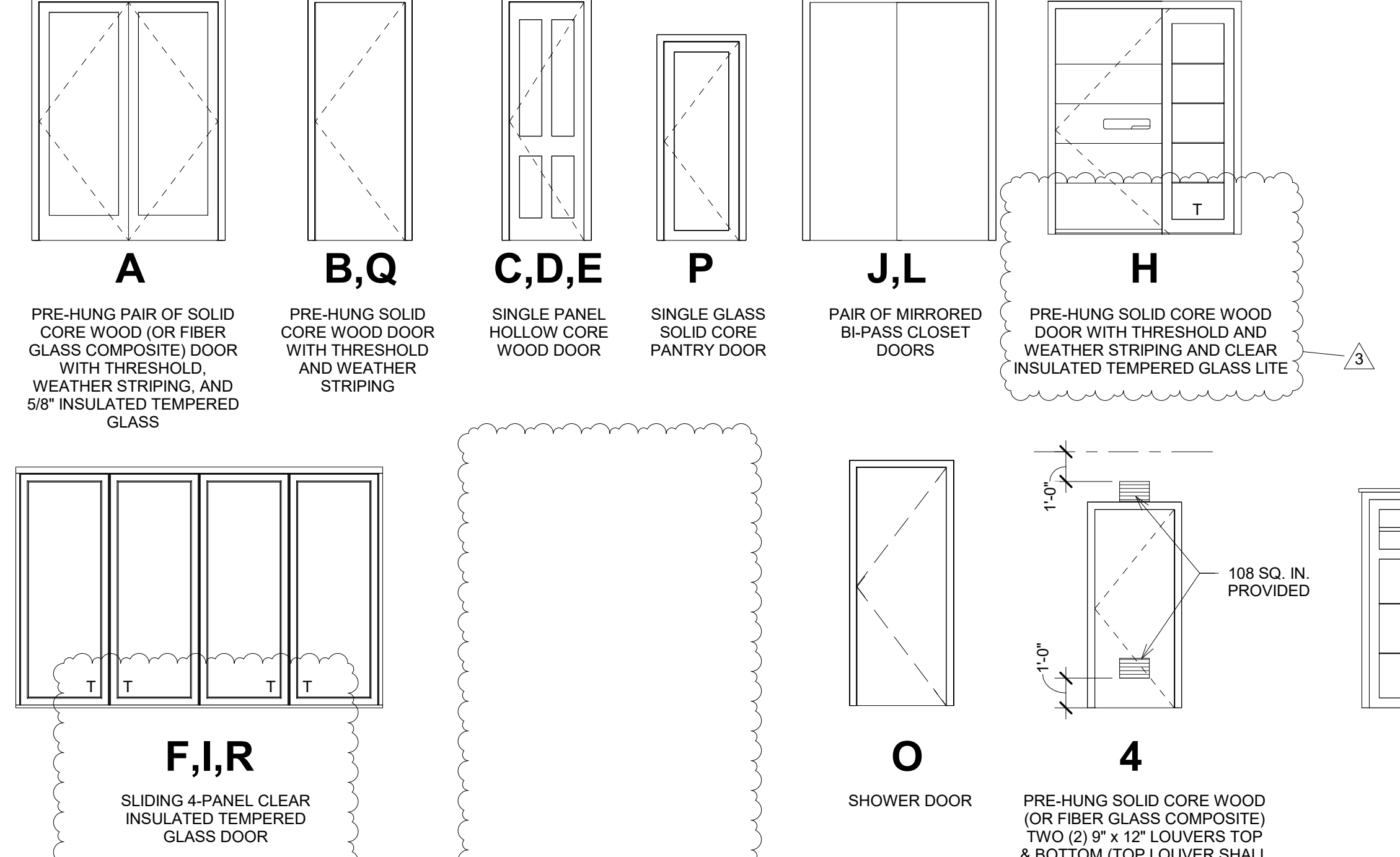


**6 East**  
1/4" = 1'-0"



**7 Laundry East**  
1/4" = 1'-0"

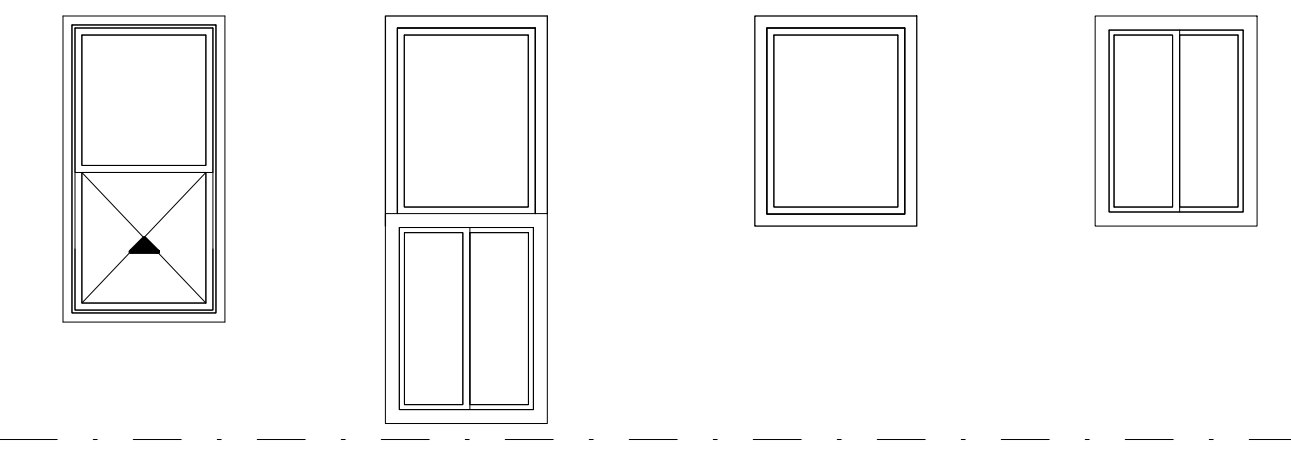
**Door Legend**



**DOOR NOTES:**  
1. PROVIDE TWO (2) SPRING HINGES FOR SELF-CLOSING

**Window Types**

- WINDOW GENERAL NOTES:**
- WINDOWS TO BE INSTALLED WITH MOISTPROOF 12" WIDE FLASHING AND CAULK WITH SILICONE SEALANT. WINDOW FRAMES TO HAVE WHITE FINISH.
  - HEADER HEIGHT IS 6'-10" ABOVE FLOOR. (UON)
  - PROVIDE SAFETY GLAZING OR TEMPERED GLASS IN HAZARDOUS LOCATIONS PER CBC 2406.3 SUCH AS GLAZING IN FIXED OR OPENABLE PANELS ADJACENT TO A DOOR WHERE THE NEAREST EXPOSED EDGE OF THE GLAZING IS WITHIN A 24" ARC OF EITHER VERTICAL EDGE OF THE DOOR IN THE CLOSED POSITION AND WHERE THE BOTTOM EXPOSED EDGE OF THE GLAZING IS LESS THAN 80" ABOVE THE WALKING SURFACE. A PERMANENT LABEL PER CBC 2406.2 SHALL IDENTIFY EACH LIGHT OF SAFETY GLAZING.
  - ALL WINDOWS IN CONDITIONED ROOMS TO HAVE CLEAR DUAL GLAZING (U=0.30 MAX. & SHGC=0.25 MAX.) (GARD VINYL OR EQUAL) (UON). ALL WINDOWS IN UNCONDITIONED AREAS TO HAVE CLEAR SINGLE GLAZING.
  - PROVIDE BLINDS FOR ALL EXTERIOR AND INTERIOR WINDOWS
  - SLEEPING ROOMS MUST HAVE A WINDOW OR EXTERIOR DOOR FOR EMERGENCY EXIT. SILL HEIGHT NOT MORE THAN 44 INCHES ABOVE THE FLOOR. 5.7 SQUARE FEET OF OPENABLE AREA. 24 INCHES CLEAR OPENING HEIGHT, 20 INCHES CLEAR OPENING WIDTH AND SHALL OPEN DIRECTLY INTO A PUBLIC STREET, ALLEY, YARD OR EXIT COURT. R310.2.1 AND R310.2.2.
  - T = TEMPERED (SEE PLAN)



**A** SINGLE HUNG VINYL-FRAMED DUAL-GLAZED  
**B** FIXED DUAL GLAZED WITH VINYL FRAME MULLER OVER A SINGLE SLIDER DUAL GLAZED WITH FIBERGLASS FRAME  
**C** FIXED SINGLE GLAZED WITH VINYL FRAME  
**E** SLIDING VINYL-FRAMED DUAL-GLAZED

Window Schedule			
Mark	Width	Height	Type
2040	2'-0"	4'-0"	A
3050	3'-0"	5'-0"	A
4020	4'-0"	2'-0"	E
4050	2'-0"	5'-6"	A
4060	4'-0"	8'-0"	B
5050	5'-0"	5'-0"	E
5680	5'-6"	8'-0"	C
6020	6'-0"	2'-0"	C
6044	6'-0"	4'-4"	E
8080	8'-0"	8'-0"	E

ALL EXTERIOR GLAZING TO HAVE TEMPERED GLASS ON OUTBOARD PANE

**Room Finish Schedule**

Abb.	Description
CN	CONCRETE
CONC	EXPOSED FINISHED CONOC.
CP	CARPET
E.C.	EXPOSED CONSTRUCTION
EPX	EPOXY FLOORING
FRP	FIBER REINFORCED PANELS
GB	GYPSSUM BOARD
INT	INTEGRAL
PLY	PLYWOOD
PT	PAINT AND SEAL
RES	RESILIENT FLOORING
RUB	RUBBER FLOORING
SL	CLEAR CONCRETE FLOOR SEALER
SV	SHEET VINYL
TB	SUSPENDED ACOUSTICAL CEILING
TL	CERAMIC TILE
TLB	CERAMIC TILE BASE
TSB	TOP SET BASE
V-T	VINYL COATED ACOUSTICAL CEILING
WBB	WOOD BASE BOARD
WD	WOOD FLOORING
WRGB	WATER RESISTANT GYPSSUM BOARD (PROVIDE CEILING FRAMING AT 12" O.C. WHERE WATER RESISTANT GYPSSUM WALL BOARD IS USED FOR CEILING APPLICATIONS)

Rooms	Room Finish Schedule									
	Name	Height	Base Material	Floor Material	Floor Finish	Walls Material	Walls Finish	Ceilings Material	Ceilings Finish	Ceiling Height
Basement										
Shower	4'	4"	TSB	TL	INT	GB	PT	GB	PT	9'-9 1/4"
Toilet	4'	4"	TSB	TL	INT	GB	PT	GB	PT	9'-9 1/4"
Bath #2	4'	4"	TSB	TL	INT	GB	PT	GB	PT	9'-9 1/4"
Bedroom #2	4'	4"	TSB	CP	INT	GB	PT	GB	PT	9'-9 1/4"
Master Bedroom	4'	4"	TSB	CP	INT	GB	PT	GB	PT	9'-9 1/4"
Master Bath	4'	4"	TSB	TL	INT	WRGB	PT	WRGB	PT	9'-9 1/4"
Bedroom #3	4'	4"	TSB	CP	INT	GB	PT	GB	PT	9'-9 1/4"
W.I.C.	4'	4"	TSB	CP	INT	GB	PT	GB	PT	9'-9 1/4"
Laundry	4'	4"	TSB	TL	INT	GB	PT	GB	PT	9'-9 1/4"
Hall	4'	4"	TSB	TL	INT	GB	PT	GB	PT	9'-9 1/4"
W.I.C.	4'	4"	TSB	CP	INT	GB	PT	GB	PT	9'-9 1/4"
Machine Rm	4'	4"	TSB	TL	INT	GB	PT	GB	PT	9'-9 1/4"
Future Elevator	-	-	-	CN	INT	GB	PT	GB	PT	22'-11"
Storage	4'	4"	TSB	TL	INT	GB	PT	GB	PT	9'-9 1/4"
Covered Patio	-	-	-	TL	INT	GB	PT	GB	PT	9'-9 1/4"
Closet	4'	4"	TSB	CP	INT	GB	PT	GB	PT	8'-0"
GF										
Dining Room	4'	4"	TSB	TL	INT	GB	PT	GB	PT	11'-0"
Kitchen	4'	4"	TSB	TL	INT	GB	PT	GB	PT	11'-0"
Vestibule	4'	4"	TSB	TL	INT	GB	PT	GB	PT	11'-0"
Living Room	4'	4"	TSB	TL	INT	GB	PT	GB	PT	11'-0"
Pantry	4'	4"	TSB	TL	INT	GB	PT	GB	PT	9'-0"
3-Car Garage	-	-	-	CN	SL	GB	PT	EC	PT	9'-0"
Entry	4'	4"	TSB	TL	SL	GB	PT	GB	PT	11'-0"
Covered Entry	-	-	-	CN	SL	GB	PT	WRGB	PT	11'-1"
Covered Patio	-	-	-	TL	SL	GB	PT	WRGB	PT	9'-1"
Powder	4'	4"	TSB	TL	INT	GB	PT	GB	PT	9'-0"
Future Elevator	-	-	-	TSB	CN	INT	GB	PT	GB	9'-0"
Closet	4'	4"	TSB	TL	INT	GB	PT	GB	PT	9'-0"
Closet	4'	4"	TSB	TL	INT	GB	PT	GB	PT	9'-0"

**Room Finish Legend**

- GENERAL NOTES:**
- 1/2" GYPSUM BOARD ON WALLS & 1/2" GYPSUM BOARD ON CEILINGS TO RECEIVE KNOCK-DOWN TEXTURE WITH TWO COATS LATEX FLAT ENAMEL
  - FLOOR MATERIAL CHANGES TO OCCUR IN CENTER OF DOOR WHEN IN A CLOSED POSITION

REVIEWED FOR CODE COMPLIANCE BY:  
WILLIAM ENGINEERING  
Approval of these plans & specifications shall not be construed to be a permit for, or an approval of any violation of any Federal, State, County or City laws or ordinances. One set of approved plans must be kept on the job until completion.  
8:30:37 AM May 28, 2021

Proposed Custom Home For: <b>Rodney and Brandy Arthur</b> 16733 La Bella Villa, Riverside, CA 92505		
21 Dec 2020	4 March 2021	
19-3675	19 May 2021	

**Schedules & Int. Elevations**