

NO.	DATE	DESCRIPTION	BY



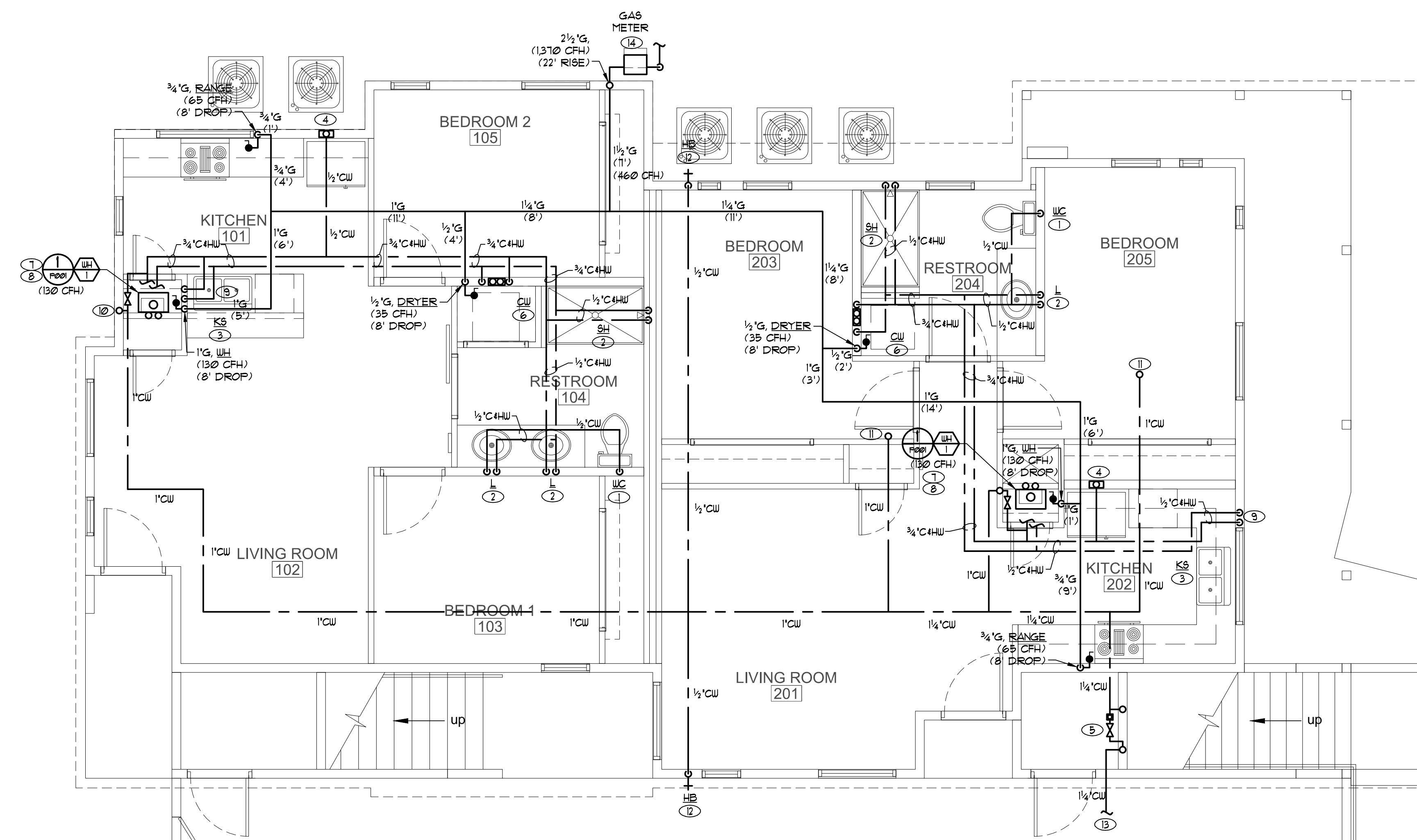
7010 Easy Wind Dr. Ste 200  
Austin, TX 78752  
512.899.3100

www.designopa.com



**NOTES:**

- ① WC, 1/2" CW.
- ② L, SH, 1/2" C+HW.
- ③ KS/DW, 1/2" C+HW.
- ④ 1/2" CW TO REF. ICEMAKER WATER BOX.
- ⑤ PROVIDE LINE SIZED SHUT-OFF VALVE, PRESSURE REGULATOR SET TO 80 PSI AND BACKFLOW PREVENTER.
- ⑥ 1/2" C+HW TO CLOTHES WASHER BOX.
- ⑦ 3/4" C+HW TO GAS TANKLESS WATER HEATER.
- ⑧ ROUTE PRESSURE RELIEF LINE FULL SIZED TO THE OUTSIDE LANDSCAPE OR TO A CODE APPROVED LOCATION WITH 6" AIR GAP.
- ⑨ ROUTE 1/2" C+HW, DOWN IN WALL, THEN IN PONY WALL OVER TO KS.
- ⑩ 1" CW, ROUTE TO LOWER AND UPPER LEVELS.
- ⑪ 1" CW, ROUTE TO UPPER LEVELS.
- ⑫ 1/2" CW TO HB, WITH VACUUM BREAKER.
- ⑬ CONTINUATION TO EXISTING CITY WATER SYSTEM. REFER TO CIVIL UTILITY SITE PLAN FOR EXACT LOCATION.
- ⑭ GAS METER, 2 1/2" G, MAIN, TOTAL LOAD OF 1310 CFH AND A TOTAL DEVELOPED LENGTH OF 91 FT. (100 FT. ROW) PER UPC TABLE 116.2(1), 2002 UPC.



NORTH  
**FIRST FLOOR - PLUMBING PLAN (WATER & GAS)**  
 SCALE: 1/4" = 1'-0"  
 P101

**150 COPPER ST.**  
**HENDERSON, NEVADA**

© 2018 OPA Design Studio. All Rights Reserved. These designs & drawings are the sole property of the Architect, OPA Design Studio. They may not be reproduced in any form, by any method, for any purpose without previous written permission from the Architect.

JOB NO.:	201724-C
PHASE:	CD
DRAWN:	SO, LE
CHECKED:	SO
DATE:	10/22/2018

**P101.1**