

NO.	DATE	DESCRIPTION	BY



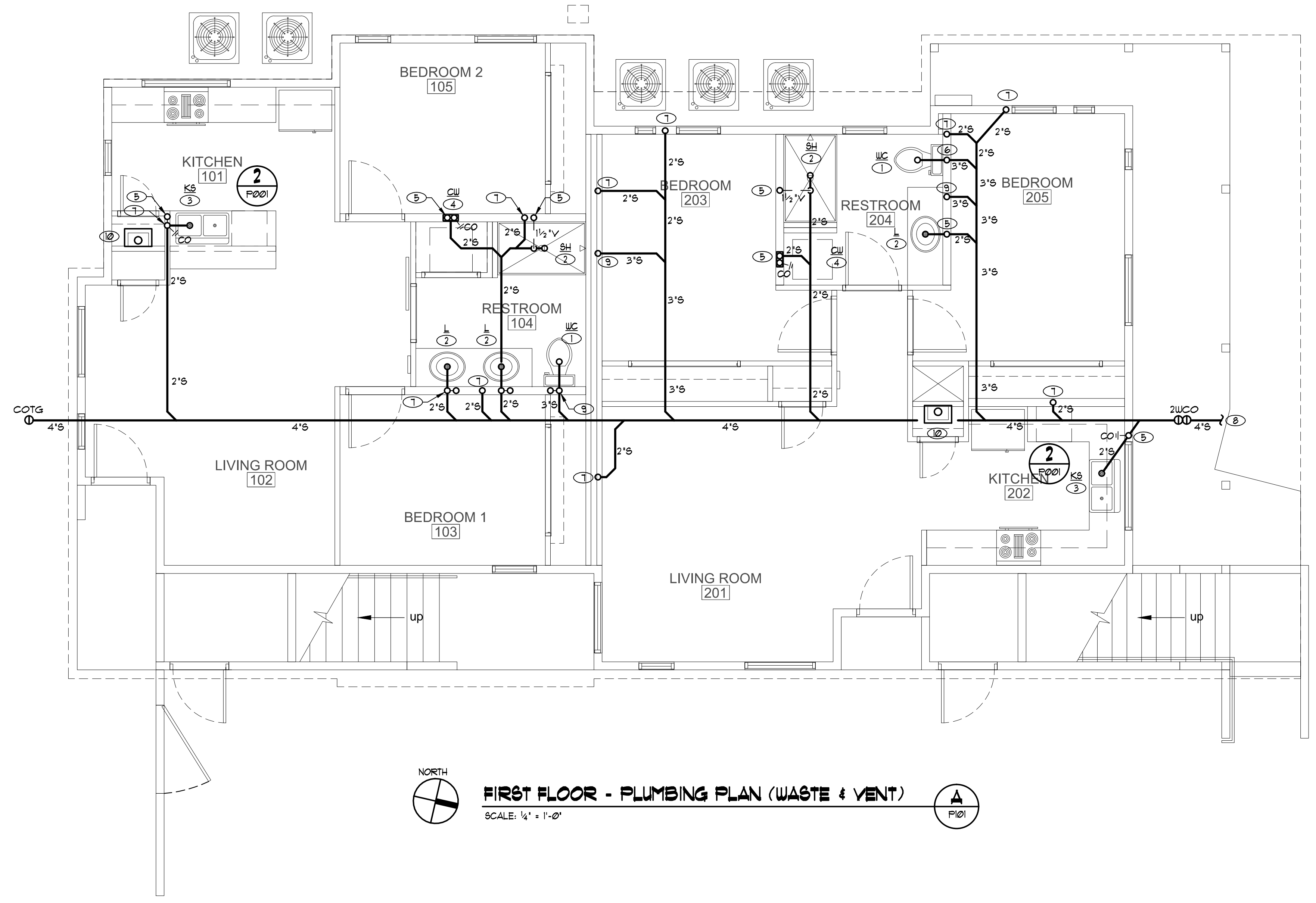
7010 Easy Wind Dr. Ste 200
Austin, TX 78752
512.899.3100

www.designopa.com



NOTES:

- ① WC, 3" S, 2" V.
- ② L, SH, 2" S, 1 1/2" V.
- ③ KS/DW, 2" S, 1 1/2" V. OR INSTALL 1 1/2" MINI STUDOR VENT.
- ④ 2" S, 1 1/2" V, TO DUEL CLOTHES WASHER BOX.
- ⑤ 1 1/2" VTR, MAINTAIN 10 FT. CLEARANCE TO FRESH AIR INTAKES.
- ⑥ 2" VTR, MAINTAIN 10 FT. CLEARANCE TO FRESH AIR INTAKES.
- ⑦ 2" S, DOWN FROM ABOVE.
- ⑧ CONTINUATION TO EXISTING CITY SANITARY WASTE SYSTEM REFER TO CIVIL UTILITY SITE PLAN.
- ⑨ 3" S, DOWN FROM ABOVE.
- ⑩ GAS TANKLESS WATER HEATER, ROUTE CONCENTRIC VENT UP THRU ROOF, MAINTAIN 10 FT. CLEARANCE TO FRESH AIR INTAKES.



NORTH
FIRST FLOOR - PLUMBING PLAN (WASTE & VENT)
 SCALE: 1/4" = 1'-0"
 P101

150 COPPER ST.
HENDERSON, NEVADA

2018 OPA Design Studio. All Rights Reserved. These designs/drawings are the sole property of the Architect, OPA Design Studio. They may not be reproduced in any form, by any method, for any purpose without previous written permission from the Architect.

JOB NO.:	201724-C
PHASE:	CD
DRAWN:	SO, LE
CHECKED:	SO
DATE:	10/22/2018

P101